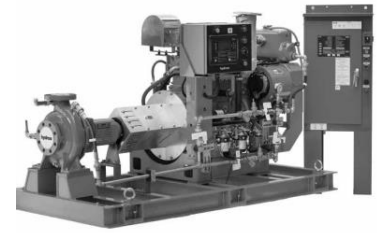


# **XFIRE**

Fire-fighting sets

## **Applications**

**Fire service applications including:**  
**Office buildings**  
**Hospitals**  
**Airports**  
**Manufacturing facilities**  
**Warehouses**  
**Power station**  
**Schools and colleges**  
**Hotels**



## **Description**

UL listed and FM certified pumps available on request.

We can build full sets according to NFPA20 and EN12845.

## **Performance range**

**Flow range: up to 908m<sup>3</sup>/h**

**Head: up to 200m**

**Electric or diesel drivers**

## **Standard material**

Ductile cast iron casing with 304SS.

Impeller.

304 or 316 Stainless steel wet parts.

Duplex 2205 Stainless steel wet parts.

## **Versions:**

### **Single stage double suction split casing pump**

Flow range: Up to 4500 m<sup>3</sup>/h

Head: Up to 230 m

### **Single stage end suction centrifugal pump**

Flow range: Up to 800 m<sup>3</sup>/h

Head: Up to 160 m

### **Vertical turbine pump**

Flow range: Up to 4000 m<sup>3</sup>/h

Head: Up to 300 m

### **Vertical in-line circulation pump**

Flow range: Up to 750 m<sup>3</sup>/h

Head: Up to 90 m